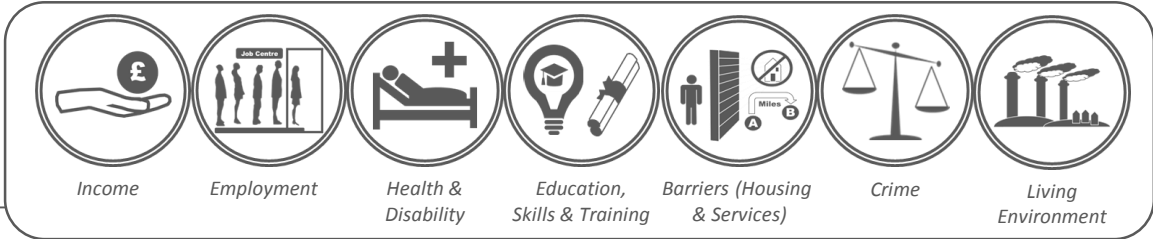


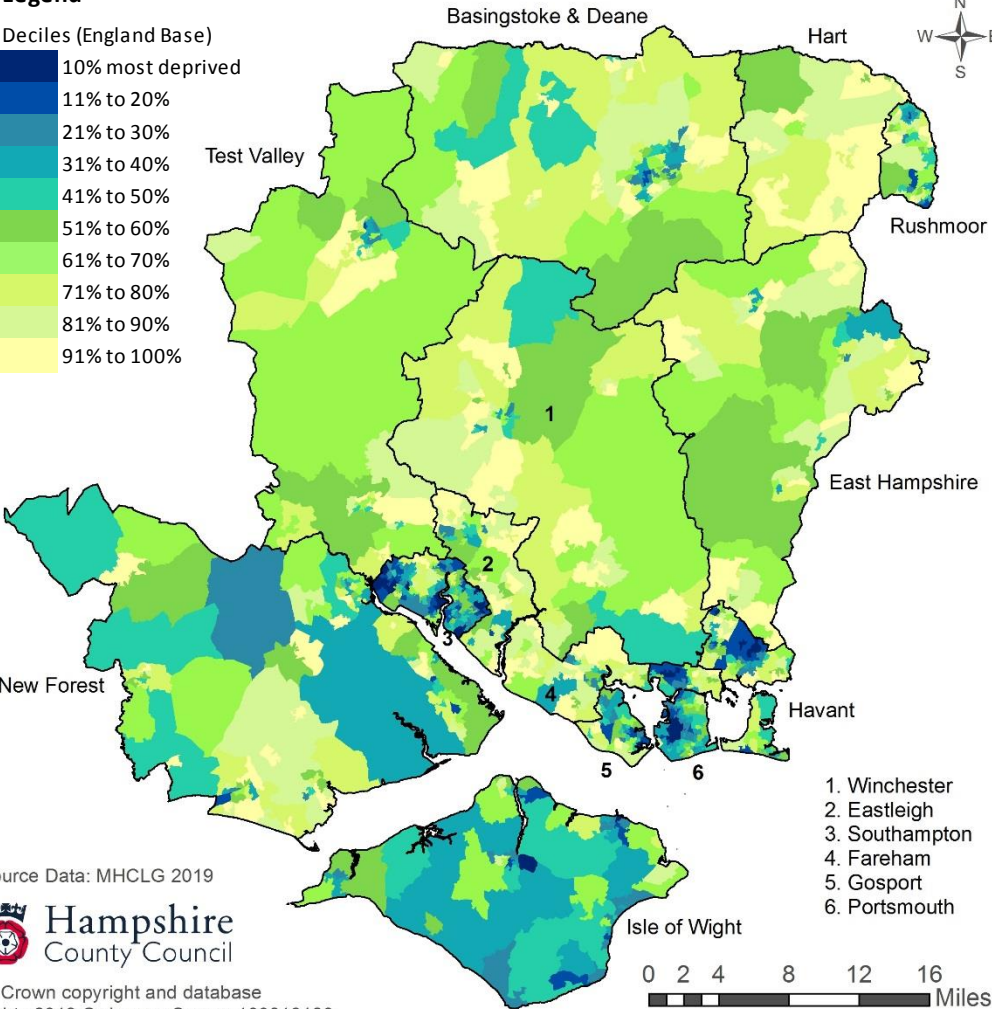
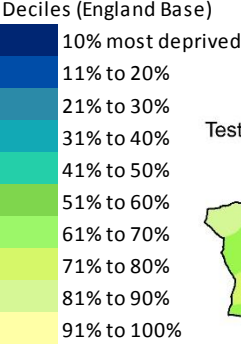
The 2019 Index of Multiple Deprivation



The Indices of Deprivation is the collective name for a group of 10 indices that all measure different aspects of deprivation, although the most widely used of these is the Index of Multiple Deprivation (IMD). The IMD is a combination of the seven indices shown above to give an overall score for the relative level of multiple deprivation experienced in every neighbourhood in England. There are 32,844 areas (lower super output areas) in England. They are ranked with 1 most deprived.

Area (Number of LSOAs in each area are in brackets)	No. of LSOAs in the 10% Most Deprived areas in England (% of LSOA in brackets)	No of LSOAs in the 11%-20% Most Deprived areas in England (% of LSOA in brackets)
Hampshire & Isle of Wight (1,194)	44	81
Hampshire Economic Area (1,105)	41	72
Hampshire County area (832)	7	33
Isle of Wight (89)	3	9
Portsmouth (125)	15	15
Southampton (148)	19	24
Basingstoke and Deane (109)	0	1
East Hampshire (72)	0	0
Eastleigh (77)	0	1
Fareham (73)	0	0
Gosport (53)	1	7
Hart (57)	0	0
Havant (78)	6	17
New Forest (114)	0	3
Rushmoor (58)	0	3
Test Valley (71)	0	1
Winchester (70)	0	0

Legend



Source Data: MHCLG 2019



© Crown copyright and database rights 2019 Ordnance Survey 100019180.

LSOA are census based population areas of between 1,000 and 3,000 residents.